

Coaxial Power Splitter/Combiner

ZA3PD-2+ ZA3PD-2

3 Way-0° 50Ω 1000 to 2000 MHz



SMA version shown
CASE STYLE: CC51

Maximum Ratings

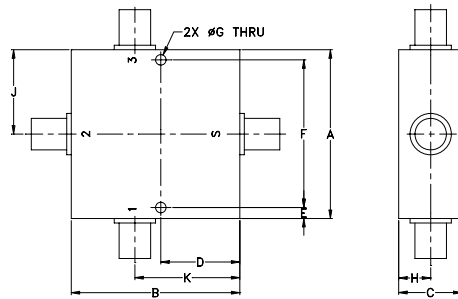
| | |
|-----------------------------|----------------|
| Operating Temperature | -55°C to 100°C |
| Storage Temperature | -55°C to 100°C |
| Power Input (as a splitter) | 10W max. |
| Internal Dissipation | 0.375W max. |

Permanent damage may occur if any of these limits are exceeded.

Coaxial Connections

| | |
|----------|---|
| SUM PORT | S |
| PORT 1 | 1 |
| PORT 2 | 2 |
| PORT 3 | 3 |

Outline Drawing



Outline Dimensions (inch/mm)

| | | | | | |
|-------|-------|-------|-------|-------|-------|
| A | B | C | D | E | F |
| 2.00 | 2.00 | .75 | .938 | .13 | 1.750 |
| 50.80 | 50.80 | 19.05 | 23.83 | 3.30 | 44.45 |
| G | H | J | K | wt | |
| .125 | .38 | 1.00 | 1.25 | grams | |
| 3.18 | 9.65 | 25.40 | 31.75 | 200.0 | |

Features

- low insertion loss, 0.3 dB typ.
- good isolation, 20 dB typ.
- up to 10W power input as splitter
- rugged, shielded case

Applications

- GPS
- PCS/DCS
- communication system
- instrumentation

| Connectors | Model | Price | Qty. |
|------------|--------------|---------|-------|
| SMA | ZA3PD-2-S+ | \$89.95 | (1-9) |
| N-TYPE | ZA3PD-2-N(+) | \$89.95 | (1-9) |

+ RoHS compliant in accordance with EU Directive (2002/95/EC)

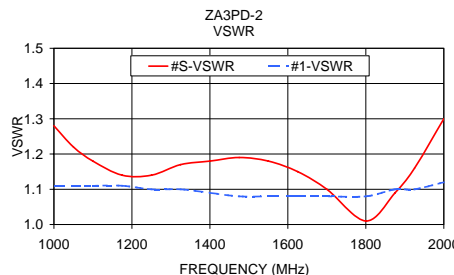
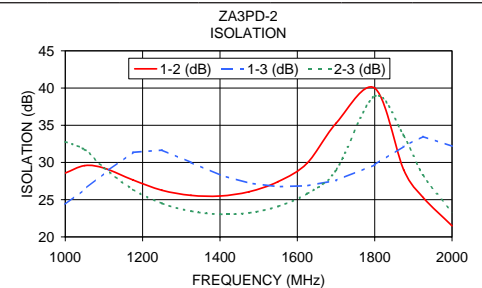
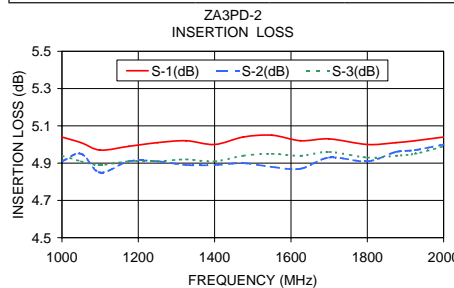
The +Suffix identifies RoHS Compliance. See our web site for RoHS Compliance methodologies and qualifications.

Electrical Specifications

| FREQ. RANGE (MHz) | ISOLATION (dB) | | INSERTION LOSS (dB) ABOVE 4.8 dB | | PHASE UNBALANCE (Degrees) | AMPLITUDE UNBALANCE (dB) |
|-------------------|----------------|------|----------------------------------|------|---------------------------|--------------------------|
| | Typ. | Min. | Typ. | Max. | Max. | Max. |
| f_L - f_U | | | | | | |
| 1000-2000 | 20 | 15 | 0.3 | 0.6 | — | 0.3 |

Typical Performance Data

| Freq. (MHz) | Insertion Loss (dB) | | | Amp. Unbal. (dB) | Isolation (dB) | | | Phase Unbal. (deg.) | VSWR S | VSWR 1 | VSWR 2 | VSWR 3 |
|-------------|---------------------|------|------|------------------|----------------|-------|-------|---------------------|--------|--------|--------|--------|
| | S-1 | S-2 | S-3 | | 1-2 | 1-3 | 2-3 | | | | | |
| 1000.00 | 5.04 | 4.91 | 4.94 | 0.13 | 28.58 | 24.37 | 32.79 | 6.80 | 1.28 | 1.11 | 1.16 | 1.10 |
| 1050.00 | 5.01 | 4.95 | 4.91 | 0.10 | 29.58 | 26.39 | 31.73 | 6.58 | 1.22 | 1.11 | 1.15 | 1.09 |
| 1100.00 | 4.97 | 4.85 | 4.89 | 0.12 | 29.25 | 28.53 | 29.26 | 7.10 | 1.18 | 1.11 | 1.14 | 1.09 |
| 1175.00 | 4.99 | 4.91 | 4.91 | 0.09 | 27.65 | 31.36 | 26.37 | 7.65 | 1.14 | 1.11 | 1.12 | 1.08 |
| 1250.00 | 5.01 | 4.91 | 4.91 | 0.10 | 26.26 | 31.67 | 24.51 | 8.18 | 1.14 | 1.10 | 1.09 | 1.08 |
| 1325.00 | 5.02 | 4.89 | 4.92 | 0.13 | 25.58 | 30.00 | 23.47 | 8.53 | 1.17 | 1.10 | 1.07 | 1.07 |
| 1400.00 | 5.00 | 4.89 | 4.91 | 0.10 | 25.49 | 28.32 | 23.05 | 9.00 | 1.18 | 1.09 | 1.05 | 1.07 |
| 1475.00 | 5.04 | 4.90 | 4.94 | 0.14 | 26.06 | 27.24 | 23.23 | 9.54 | 1.19 | 1.08 | 1.03 | 1.06 |
| 1550.00 | 5.05 | 4.88 | 4.95 | 0.18 | 27.42 | 26.75 | 24.09 | 10.02 | 1.18 | 1.08 | 1.03 | 1.06 |
| 1625.00 | 5.02 | 4.87 | 4.94 | 0.14 | 29.90 | 26.87 | 25.81 | 10.76 | 1.15 | 1.08 | 1.05 | 1.05 |
| 1700.00 | 5.03 | 4.93 | 4.96 | 0.10 | 35.26 | 27.59 | 28.96 | 11.28 | 1.10 | 1.08 | 1.06 | 1.05 |
| 1800.00 | 5.00 | 4.91 | 4.93 | 0.10 | 39.99 | 29.69 | 38.91 | 11.76 | 1.01 | 1.08 | 1.09 | 1.06 |
| 1875.00 | 5.01 | 4.96 | 4.94 | 0.07 | 29.01 | 32.17 | 33.58 | 12.40 | 1.09 | 1.10 | 1.11 | 1.07 |
| 1925.00 | 5.02 | 4.97 | 4.95 | 0.07 | 25.31 | 33.50 | 28.31 | 12.58 | 1.16 | 1.10 | 1.12 | 1.08 |
| 2000.00 | 5.04 | 5.00 | 4.99 | 0.04 | 21.49 | 32.18 | 23.34 | 13.16 | 1.30 | 1.12 | 1.14 | 1.10 |



electrical schematic



For detailed performance specs & shopping online see web site

P.O. Box 350166, Brooklyn, New York 11235-0003 (718) 934-4500 Fax (718) 332-4661 The Design Engineers Search Engine Provides ACTUAL Data Instantly at minicircuits.com

Notes: 1. Performance and quality attributes and conditions not expressly stated in this specification sheet are intended to be excluded and do not form a part of this specification sheet. 2. Electrical specifications and performance data contained herein are based on Mini-Circuit's applicable established test performance criteria and measurement instructions. 3. The parts covered by this specification sheet are subject to Mini-Circuits standard limited warranty and terms and conditions (collectively, "Standard Terms"); Purchasers of this part are entitled to the rights and benefits contained therein. For a full statement of the Standard Terms and the exclusive rights and remedies thereunder, please visit Mini-Circuits' website at www.minicircuits.com/MCLStore/terms.jsp.

REV. B
M113397
ZA3PD-2
HY/TD/CP/AM
090826