
**PRODUCT DATA SHEET**
**C1460**

**4-Port Dual Directional Coupler** employs two, 3-Port Uni-Directional Couplers, internally connected, in tandem, providing measurement of both forward and reverse power. Ideal for simultaneously monitoring a system's forward and reverse power and for reflectometer measurements. Unlike the Bi-Directional Coupler, the directivity of the Dual Directional Coupler is unaffected by the loads on the coupled ports.

**Features:**

High Power      Wide Bandwidths      Small Size      Flat Coupling      Custom Designs Available

**Electrical Specifications:**

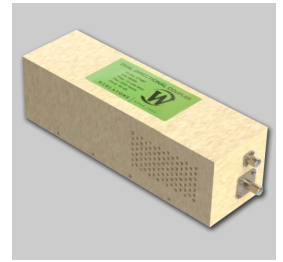
Frequency:            0.01 - 250 MHz  
 Power:                2000 W CW  
 Coupling:             50 ± 1.0 dB Max.  
 Insertion Loss:      0.15 dB Max.  
 Flatness:             ± 1.00 dB Max.  
 VSWR (ML):         1.15:1 Max.  
 Directivity:          20 dB Min.

**Mechanical Specifications:**

Type:                    Connectorized  
 Material:              Aluminum 6061-T6  
 Surface Finish:      Chem. Film Per MIL-DTL-5541F  
                               Type I Class 3 (Yellow Iridite)  
                               RoHS Compliant Available  
 Operating Temperature: -55°C to +75°C  
 Storage Temperature: -60°C to +85°C  
 Humidity:             95% Non-Condensing  
 Size:                    10.0 x 3.0 x 3.0"

**Connector Configurations:**

Model	Input (J1)	Output (J2)	Fwd (J3)	Rev (J4)
C1460-10	N Female	N Female	N Female	N Female
C1460-12	N Female	N Female	SMA	SMA
C1460-13	N Female	N Female	BNC	BNC
C1460-20	7/16 Female	7/16 Female	N Female	N Female
C1460-22	7/16 Female	7/16 Female	SMA	SMA
C1460-23	7/16 Female	7/16 Female	BNC	BNC
C1460-54	C Female	C Female	BNC	BNC
C1460-714	N Male	N Female	N Female	N Female
C1460-727	7/16 Male	7/16 Female	N Female	N Female

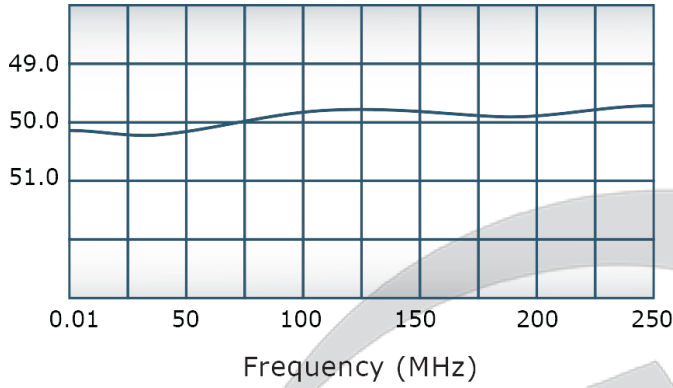


## PRODUCT DATA SHEET

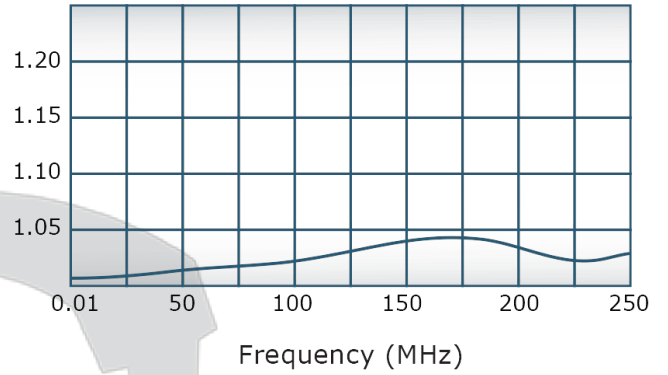
C1460

### Performance Data (Specifications subject to change without notice):

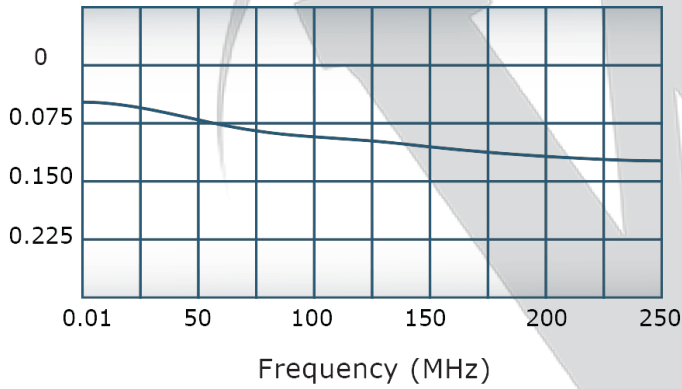
Coupling:



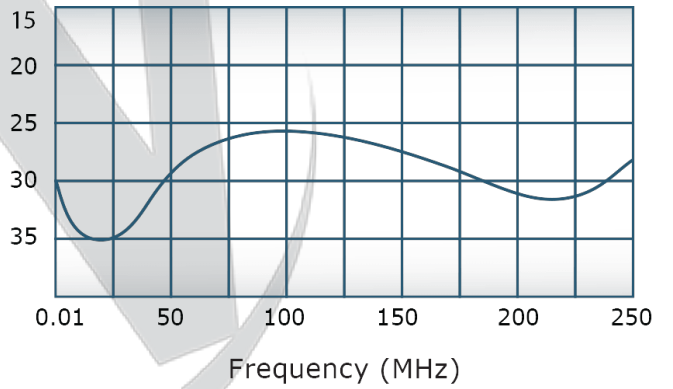
VSWR:



Insertion Loss:



Directivity:



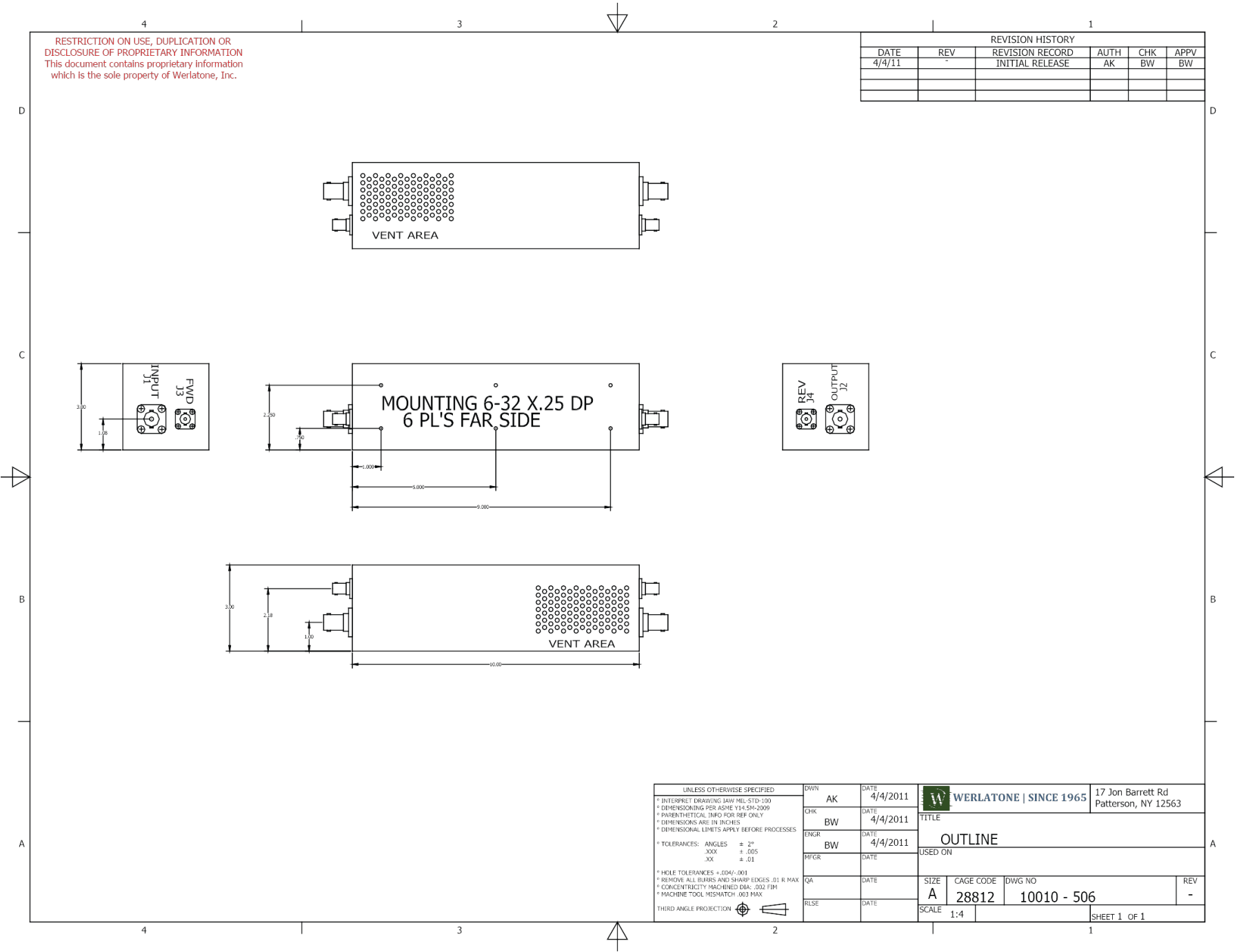
Restriction on use, duplication, or disclosure of proprietary information. This document contains proprietary information which is the sole property of

Werlatone, Inc.

Werlatone, Inc. 17 Jon Barrett Road Patterson, NY 12563 T:(845)278-2220 F:(845)278-3440 sales@werlatone.com www.werlatone.com

RESTRICTION ON USE, DUPLICATION OR DISCLOSURE OF PROPRIETARY INFORMATION  
This document contains proprietary information which is the sole property of Werlatone, Inc.

REVISION HISTORY					
DATE	REV	REVISION RECORD	AUTH	CHK	APPV
4/4/11	-	INITIAL RELEASE	AK	BW	BW



UNLESS OTHERWISE SPECIFIED		DWN	DATE	<b>WERLATONE   SINCE 1965</b>	17 Jon Barrett Rd Patterson, NY 12563	
* INTERPRET DRAWING IN ACCORDANCE WITH MIL-STD-100	* DIMENSIONING PER ASME Y14.5M-2009	AK	4/4/2011		TITLE	
* PARENTHETICAL DIMENSIONS FOR REF ONLY	* DIMENSIONS ARE IN INCHES	BW	4/4/2011	OUTLINE		
* DIMENSIONAL LIMITS APPLY BEFORE PROCESSES	* TOLERANCES: ANGLES = 2°	BW	4/4/2011	USED ON		
	.XXX = .005	QA		SIZE	CAGE CODE	DWG NO
	.XX = .01	RLSE		A	28812	10010 - 506
* HOLE TOLERANCES = .004/-.001	* REMOVE ALL BURRS AND SHARP EDGES .01 R MAX			SCALE		
* CONCENTRICITY MACHINED DIA: .002 FIM	* MACHINE TOOL MISMATCH .003 MAX			1:4		
THIRD ANGLE PROJECTION						SHEET 1 OF 1

Restriction on use, duplication, or disclosure of proprietary information. This document contains proprietary information which is the sole property of Werlatone, Inc.  
Werlatone, Inc. 17 Jon Barrett Road Patterson, NY 12563 T:(845)278-2220 F:(845)278-3440 sales@werlatone.com www.werlatone.com